

Ara



Precise, well-defined light from a versatile series of tiny, effective LED fittings. Choose surface-mounted, recessed or recessed-to-raised models. Choose independent magnetic spots or a magnetic track system. Choose fixed, 30°, 70° or 160° tilt. Choose fixed, 350° rotation or total mobility. Choose 10°, 20°, 30° or 48°/8° beam. For indoor use. For object, display, area, ambient and accent lighting. For showcases, niches, open displays, walls and many other applications. Tool-free adjustment. Up to date LED technology.

High-quality, uniform light ensured for entire lifetime. Rigorously tested and documented.

Ara: controlled, controllable light from a free-spirited series of fittings.

Ara

- For indoor use
- Fixed or adjustable
- Recessed, recessed-to-raised, surface-mounted or magnetic
- Individual models or track system
- Anodised aluminium
- Dimmable
- 3,000 K
- Operating ambient temperature -10° to $+40^{\circ}$

- Beam angle 10° , 20° , 30° or $48^{\circ} / 8^{\circ}$
- Constant Current: Ara 1, 2 and 3
- Constant Voltage 12 V: Ara 4
- Up to date LED technology
- CRI (Ra) 97
- Other colours and CCT by special order
- Five-year warranty
- Black. This product can be painted and color matched with RAL codes.

IP 20

0.6 kg
Fullset

3.5 w
@ 350mA

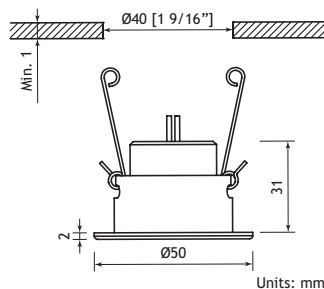
RoHS CE F

Ara 1

2.2 watt
LED luminous flux 115 lm
Fixture luminous efficacy 55 lm/W

Specify when ordering

Beam angle 10° , 20° , 30° or $48^{\circ} / 8^{\circ}$



IP 20

0.09 kg

2.2 w
@ 700mA

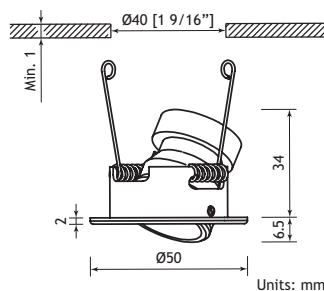
Ø40 mm

Ara 1 30

2.2 watt
LED luminous flux 115 lm
Fixture luminous efficacy 55 lm/W

Specify when ordering

Beam angle 10° , 20° , 30° or $48^{\circ} / 8^{\circ}$



IP 20

30

0.08 kg

2.2 w
@ 700mA

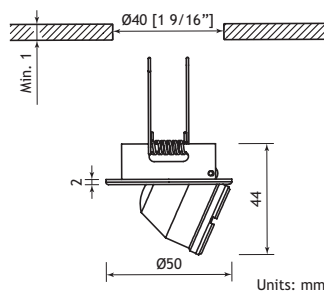
Ø40 mm

Ara 2

1.5 watt
LED luminous flux 95 lm
Fixture luminous efficacy 63 lm/W

Specify when ordering

Beam angle 10° , 20° , 30° or $48^{\circ} / 8^{\circ}$



IP 20

70

0.06 kg

1.5 w
@ 500mA

Ø40 mm

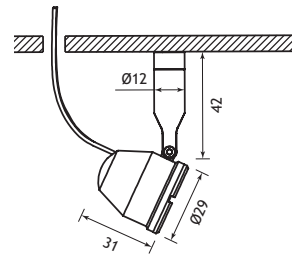
ARCHAEOLOGIE IN BERLIN



Ara 3

1.5 watt
 Attaches to any magnetic surface
 LED luminous flux 95 lm
 Fixture luminous efficacy 63 lm/W

Specify when ordering
 Beam angle 10°, 20°, 30° or 48° / 8°

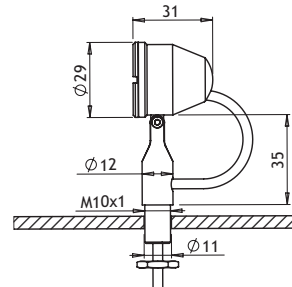


IP 20
 160°
 0.06 kg
 1.5 w
 @ 500mA

Ara 3 F

1.5 watt
 M10x1 thread
 LED luminous flux 95 lm
 Fixture luminous efficacy 63 lm/W

Specify when ordering
 Beam angle 10°, 20°, 30° or 48° / 8°

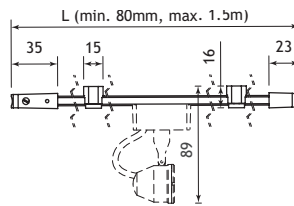


IP 20
 160°
 0.06 kg
 1.5 w
 @ 500mA

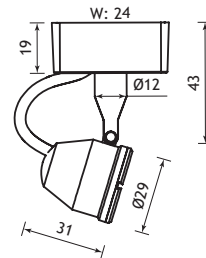
Ara 4

1.5 watt
 Magnetic spot for use with Track A
 surface track
 LED luminous flux 95 lm

Specify when ordering
 Beam angle 10°, 20°, 30° or 48° / 8°
 Track length (L) min. 80 mm, max. 1.5 m
 and on special request



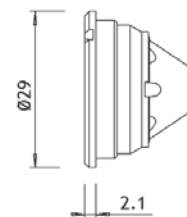
W: Track Brackets 17 / Fixture 29



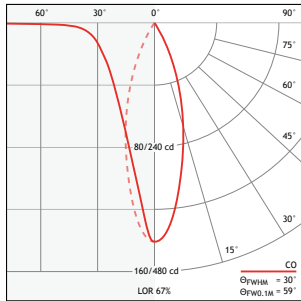
IP 20
 160°
 350°
 0.06 kg
 1.5 w
 @ 500mA

Lenses

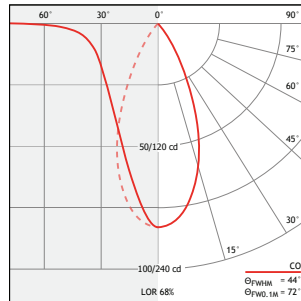
Beam angles 10°, 20°, 30° or 48° / 8°



Photometrics

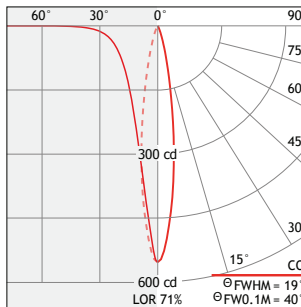


Ara 1, Ara 1 30 (For Ara 2, 3 & 4, multiply by 0.85)

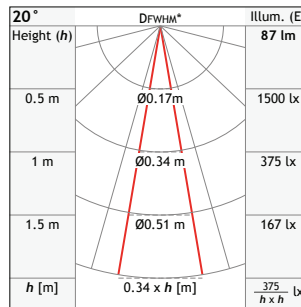


Spot 10

Attribute	Ara 1, 1 30	Ara 2, 3, 4
Beam Angle	10	10 °
Luminous Flux	90	81 lm

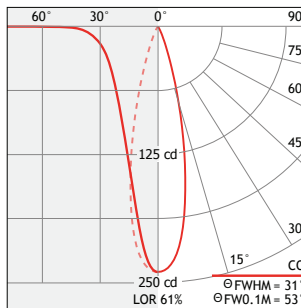


Ara 1, Ara 1 30 (For Ara 2, 3 & 4, multiply by 0.85)

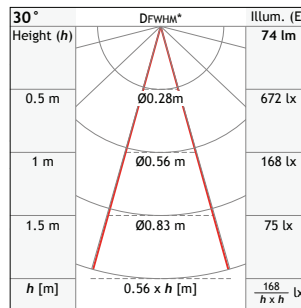


Spot 20

Attribute	Ara 1, 1 30	Ara 2, 3, 4
Beam Angle	19	19 °
Luminous Flux	87	74 lm

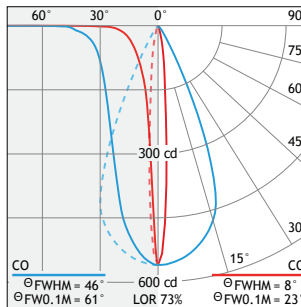


Ara 1, Ara 1 30 (For Ara 2, 3 & 4, multiply by 0.85)

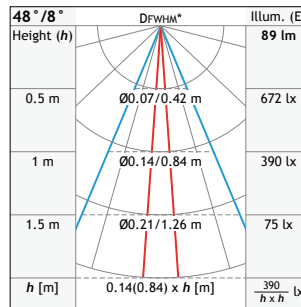


Spot 30

Attribute	Ara 1, 1 30	Ara 2, 3, 4
Beam Angle	31	31 °
Luminous Flux	74	63 lm



Ara 1, Ara 1 30 (For Ara 2, 3 & 4, multiply by 0.85)



Spot 48/8

Attribute	Ara 1, 1 30	Ara 2, 3, 4
Beam Angle	46 / 8	46 / 8 °
Luminous Flux	89	75 lm

*Illustrated: average over DFWHM For maximum values: multiply results by 1.43

Illuminance values account for distances (h) greater than 100 mm. The photometric performance was measured at thermal steady state in 22° C ambient temperature driven *at 700 mA. If the luminaire is dimmed, scale the results in accordance with dimming *performance.

